



Designers' Choice

# IEEE 1394 PLUGS & SOCKETS

## HI-SPEED SERIAL BUS — IEEE 1394 SOCKETS

"FIREWIRE"



### THE HI-SPEED "JACK" FOR THE 21ST CENTURY

#### FEATURES

- Snap-In PC tails hold connector in position for soldering
- Tin Lead Plated solder tails for excellent solderability
- Gold Plated contacts for low contact resistance and excellent reliability

#### SPECIFICATIONS

Shell: Phosphor Bronze  
 Insulator: Thermoplastic, Rated UL 94V-0  
 Contacts: Phosphor Bronze  
 Plating:  
 Contact Area: Gold Flash over Nickel  
 Solder Tails: Tin Lead over Nickel

#### ELECTRICAL CHARACTERISTICS

Rated Voltage: 30VAC (RMS)  
 Contact Current Rating: 1 Amp DC max.  
 Contact Resistance: 15 mΩ  
 Insulation Resistance: 1000 MΩ min.  
 Dielectric Withstanding Voltage:  
 750V AC for 1 minute  
 Operating Temperature:  
 32°F (0°C) to 104°F (40°C)  
 Capacitance: 2pF max.

#### DESIGN ADVANTAGES

**Superfast Data Transfer:**  
 Current speeds of 100Mbps, 200Mbps and 400Mbps, and roadmapped to 1GB to 3.2 GBps per second

**Daisy Chaining:** Up to 63 devices, each one acts as an active repeater on the bus, with a maximum of 16 repeats

**Port Expansion:** Alleviates restriction of limited COM Ports and available IRQ's

**Wide Bandwidth:** Operates in asynchronous or isochronous data streams. Digital interface designed for high speed applications for PC peripherals, consumer electronics and communications.

**Simple Connections:** True Plug and Play no jumpers, DIP Switches or IRQ's to set

**Hot Swapping:** Allows peripherals to be connected or disconnected without turning off computer

**Highly Versatile Bus:** One bus can handle a variety of devices operating at different speed classes for true backwards compatibility

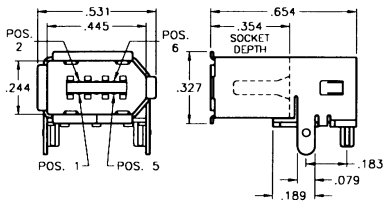
**Standard Digital Interface:** Allows consumer electronics and computer devices to communicate together on one interface

#### DEVICE APPLICATIONS

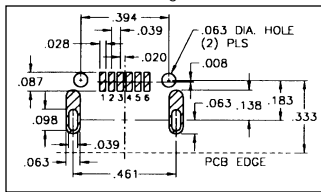
- Broadcast TV
- Cable TV
- Digital Camcorders
- Digital Cameras & VCRs
- Computers & Hard Disks
- DVD Players
- Printers & Monitors
- Stereos

#### SURFACE MOUNT

##### HORIZONTAL



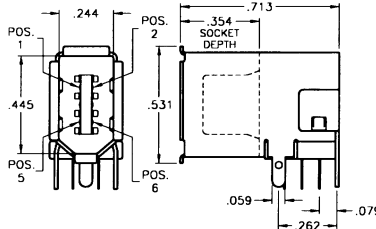
##### Mounting Detail



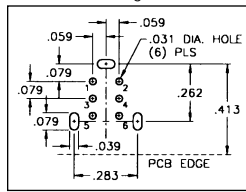
CAT. NO. 927

#### THRU-HOLE MOUNT

##### UP-RIGHT



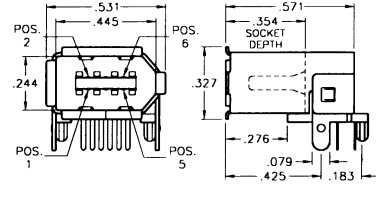
##### Mounting Detail



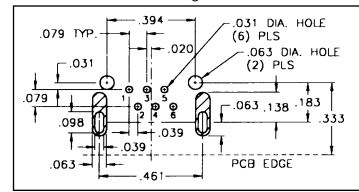
CAT. NO. 930

#### THRU-HOLE MOUNT

##### HORIZONTAL



##### Mounting Detail



CAT. NO. 929

## IEEE 1394 PLUG

"FIREWIRE"



#### FEATURES

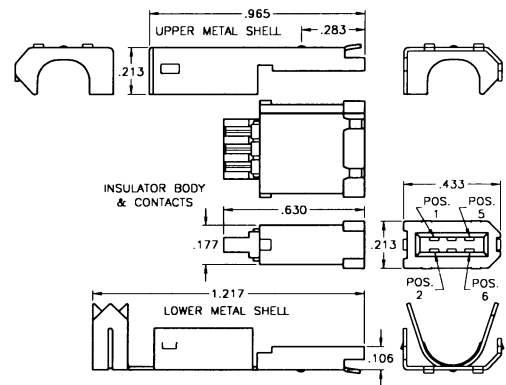
- Modular design allows easy and fast assembly of components
- Integrated strain relief - crimps to wire insulation
- Tin Lead Plated solder tails for excellent solderability
- Gold Plated contacts for low contact resistance and excellent reliability

#### SPECIFICATIONS

Shell: Phosphor Bronze  
 Insulator: Thermoplastic, Rated UL 94V-0  
 Contacts: Phosphor Bronze  
 Plating:  
 Contact Area: Gold Flash over Nickel  
 Solder Tails: Tin Lead over Nickel

#### ELECTRICAL CHARACTERISTICS

Contact Resistance: 30mΩ max.  
 Insulation Resistance: 100 MΩ min.  
 Withstanding Voltage: 500V ± 50V DC  
 Operating Temperature: 32°F (0°C) to 104°F (40°C)



CAT. NO. 928 (Supplied Unassembled)